

Join us in beautiful Miami, Florida, USA!

Boban Franeta - [305-482-3052](tel:305-482-3052) - info@sfrk.org

RKNA follows CKC Standard but has added DQ faults as listed
in RKNA bylaws - download at www.rknaonline.com
Docked & tailed dogs welcome



Download entry - www.rknaonline.com

Enter at <http://www.zooza.com/>

Visit us on Facebook!!

We look forward to seeing you at our show!

**Passports required to enter USA.*

Please check with USA consulate do you need a VISA to enter USA.

** Dogs must have current rabies vaccination certificate.*



SOUTH FLORIDA ROTTWEILER KLUB

A full member club of the RKNA

ZTP, KORUNG & GEKOERT & STANDARD EVALUATIONS
FRIDAY, MARCH 7, 2014

RKNA BREED SHOW
SATURDAY, MARCH 8, 2014

RKNA SPRING SIEGER SHOW
SUNDAY, MARCH 9, 2014

JUDGES: Anton Spindler (ADRK Koermeister)
Miomir Marcic (FCI Serbia)

TWO SHOWS - TWO DAYS
Topeekeegee Yugnee Park
Hollywood, Florida

Closing date: March 2, 2014

SCHEDULE IS SUBJECT TO CHANGE!

Closing Date: March 2, 2014.

Entries will close early if limit is reached prior to closing date

Entries are nonrefundable

Proof of registration SHOULD be available at check-in

Breed Surveys & Standard Evaluations **MUST** have original registration, passing hip rating, weight certificate and score book (if applicable)

This is a RKNA Sanctioned Event

SCHEDULE OF EVENTS:

Friday, March 7, 2014

Breed Surveys & Standard Evaluation location:

*Miami Police Benevolent Association Park,
2300 Northwest 14th Street, Miami, Florida*

ZTP, KORUNG & GEKOERT & STANDARD EVALUATIONS

6:00 pm Registration with original paperwork

6:30 pm Standard Evaluations followed by ZTP, Korung & Gekoert

Protection to follow all measuring and temperament test of all SE & breed survey dogs.

Depending on the number of ZTP entries, ZTP trial can be held Sunday, March 8, 2014 at TY Park. Final schedule will be announced after entries' closing date.

SHOW INFORMATION: Saturday, March 8, 2014

Dogs eligible for Best Adult Male and Best Adult Female may come from the Open, Champion, Working, and Veteran classes. The V1 winner of each class will compete for Best Adult Male and Best Adult Female. Dogs eligible for Best Youth Male and Best Youth Female come from the 12-18 and 18-24 month classes. Best in Show is from the V1 Rated Best Adult Male, Best Adult Female, Best Youth Male, Best Youth Female.

7:30 AM - Registration and check-in

8:00 AM - Opening welcome and then classes

Saturday, March 8, 2014 - BREED SHOW

Miomir Marcic - All Male Classes & Best in Show

Anton Spindler - All Female Classes

Male puppy and youth classes starting with 4-6 months through 24 months.

Female puppy and youth classes starting with 4-6 months through 24 months.

Naming of 2012 SFRK Best Male Puppy & Best Youth Male.

Naming of 2012 SFRK Best Youth Male and Female.

Lunch at Judges' discretion.

All male Open, Champion, Working and Veteran Classes - judged by Miomir Marcic

All female Open, Champion, Working and Veteran Classes - judged by Anton Spindler

Stud Dog, Brood Bitch, Kennel Class and Exhibition Class - judged by Miomir Marcic

Selection of SFRK Best Adult Male - judged by Miomir Marcic

Selection of SFRK Best Adult Female - judged by Anton Spindler

Selection of SFRK Best Youth Male - judged by Miomir Marcic

Selection of SFRK Best Youth Female - judged by Anton Spindler

Selection of SFRK Best Male Puppy - judged by Miomir Marcic

Selection of SFRK Best Female Puppy - judged by Anton Spindler

Selection of SFRK Best in Show - judged by Miomir Marcic

Chosen from the V1 Rated - Best Adult Male, Best Adult Female, Best Youth Male & Best Youth Female.

Closing Ceremonies

Entries limited to 110 dogs per day

Sunday, March 9, 2014 - RKNA SPRING SIEGER SHOW

7:30 AM - Registration and check-in

8:00 AM - Opening welcome and then classes

Anton Spindler - All Male Classes, Klubsieger & Most Beautiful

Miomir Marcic - All Female Classes, Klubsiegerin & Kombi

Male puppy and youth classes starting with 4-6 months through 24 months.

Female puppy and youth classes starting with 4-6 months through 24 months.

Naming of 2012 RKNA Most Beautiful Male and Female Puppies.

Naming of 2012 RKNA Youth Sieger and Youth Siegerin.

Lunch at Judges' discretion.

All male Open, Champion, Working and Veteran Classes - judged by Anton Spindler

All female Open, Champion, Working and Veteran Classes - judged by Miomir Marcic

Stud Dog, Brood Bitch, Kennel Class and Exhibition Class - judged by Anton Spindler

Selection of RKNA Sieger - judged by Anton Spindler

Selection of RKNA Siegerin - judged by Miomir Marcic

Selection of RKNA Youth Sieger - judged by Anton Spindler

Selection of RKNA Youth Siegerin - judged by Miomir Marcic

Selection of Most Beautiful Male Puppy - judged by Anton Spindler

Selection of Most Beautiful Female Puppy - judged by Miomir Marcic

Selection of Most Beautiful in Show - judged by Anton Spindler

Chosen from the V1 Rated Sieger/Siegern & Youth Sieger/Siegerin

Selection of Kombi Sieger/in - judged by Anton Spindler

Closing Ceremonies

Entries limited to 110 dogs per day

SHOW INFORMATION: Sunday, March 9, 2014

Dogs eligible for Sieger and Siegerin may come from the Open, Champion, Working, and Veteran classes. The V1 winner of each class will compete for Sieger and Siegerin. Dogs eligible for Youth Sieger and Youth Siegerin come from the 12-18 and 18-24 month classes. Most Beautiful in Show is from the V1 Rated Sieger, Siegerin, Youth Sieger and Youth Siegerin.

8:00 PM - Saturday, March 7, 2014

JUDGE'S DINNER

Restaurant - "THE KNIFE"

Argentinean "All you can eat" Steak House

www.thekniferestaurant.com/

602 E. Hallandale Beach Blvd. Hallandale, Florida

(10 minutes from the show location)

\$30 - per person plus tax plus tips (\$36 each person total)

Click on their website to see the Menu. Everything is included in the price, soup, appetizer, desert, 1 bottle of wine per person, or 2 beers, unlimited soda refills and all you can eat salad bar and premium meat from the grill. You will pay for your dinner at the restaurant



THINGS & EVENTS TO SEE DURING YOUR STAY IN SOUTH FLORIDA:

***MIAMI INTERNATIONAL BOAT SHOW
FEBRUARY 14.-20.2013***



<http://www.miamiboatshow.com/>

Vizcaya Museum and Gardens



American Airlines Arena



Zoo Miami



Beaches of Miami Beach



Metromover



Lummus Park Beach



The Kampong



Design District



Parrot Jungle and Gardens



Deering Estate at Cutler



Jungle Island



Miami Seaquarium



FOR YOUR INFORMATION

If you are entered in a breed survey or Standard Evaluation, remember to bring originals of your dog's registration, hip certification (when applicable), and support documents for all accomplishments to the show. They **MUST** be available for inspection by Show Secretary at check in.

Keep this page for your own records.

Date entries mailed: _____

Cheque # and amount _____ \$ _____

Dog #1 _____

Class entered _____

Dog #2 _____

Class entered _____

Dog #3 _____

Class entered _____

Dog #4 _____

Class entered _____

Judge's Dinner prepayment _____

Number of guests _____

CONFORMATION SHOW INFORMATION

Puppy Classes

4-6 Month Male/Female; 6-9 Month Male/Female; 9-12 Month Male/Female

Youth Classes

12-18 Month Male/Female; 18-24 Month Male/Female

Adult Classes

Open Male/Female: For all Rottweilers 24 months and older without an IPO title or a Championship title.

Champion Male/Female: For all Rottweilers 24 months and over with a Championship title from RKNA, AKC, CKC, CACIB, all national breed club champions, Sieger/Siegerin.

Working Male/Female: For all Rottweilers 24 months and older with an IPO title.

Veteran Male/Female: For all Rottweilers 8 years or older the day of the show.

Kombi class: Kombi-Sieger Title is only available at the RKNA Spring Sieger Show (held each spring). Entrants must have trialed successfully at the previous RKNA Meisterschaft. These entrants must be entered in a regular class at the RKNA Spring Sieger Show and then compete in a Kombi class with both sexes for the title Kombi Sieger.

Brood Bitch: Entered by the owner of the brood bitch. Must have at least two (2) offspring appear in the ring. Offspring must be entered in regular classes. The class is evaluated on the merits of the offspring. Owner of the brood bitch does not need to be the owner of the offspring.

Stud Dog: Entered by the owner of the stud dog. Must have at least two (2) offspring appear in the ring. Offspring must be entered in regular classes. The class is evaluated on the merits of the offspring. Owner of the stud dog does not need to be the owner of the offspring.

Kennel Class: Entered by the kennel owner. Three (3) or more dogs bred by the kennel owner and registered with the kennel name of the entrant. All dogs must be entered in the show's regular classes. The kennel owner need not be the owner of all the dogs.

Exhibition Class: Exhibition Classes are for critique only. This class is open to Rottweilers with a disqualifying fault or who are spayed or neutered. Puppies to young to enter regular puppy class can enter exhibition class if puppy has a proof of registration. No ratings or placements are to be awarded. Dogs are critiqued with fault(s) noted. This class is for educational purposes only.

If a dog is eligible for more than one class, the owner may determine the class to enter in.

Adults (24 mo. & older)

V	-		Excellent
SG	-	Very	good
G	-		Good

SHOW RATINGS

B	-	Satisfactory
U	-	Unsatisfactory

DQ - Disqualified

Puppies (4-12 mos.)

VP - Very promising

P - Promising

S - Satisfactory

NP - Not promising

DQ - Disqualified

Youth (12-24 mos.)

V - Excellent

SG - Very good

G - Good

B - Satisfactory

U - Unsatisfactory

DQ - Disqualified

ENTRY FEES

\$60 - per conformation class

\$100 - Ztp, Koreung & Gekoert

\$75 - Standard Evaluation

Closing date: March 2, 2014

Online entries available on Zooza

www.zooza.com Search "Animal Events" for "Florida"

BREED SURVEYS AND STANDARD EVALUATION MUST HAVE ORIGINAL DOCUMENTATION FOR CHECK-IN.

RKNA recognizes all titles. To have your dog's title/award printed in the show catalog, a copy of the certificate MUST be sent with your entry form. If you would like your dog's hip and elbow ratings recorded in the catalog, please make sure you include a copy of your dog's hip/elbow results with your entry fee.

Cell: 1-305-482-3052

Email: info@sfrk.org

NO ENTRIES WILL BE REFUNDED

CATALOG ADVERTISING

Catalog page size is 8.5" x 11"
Full page ad - \$100 (black& white)
Back cover & inside cover - \$200 (color)
Ads must be print ready.

FOR A SPONSORSHIP OF \$100, WE WILL PRINT A FREE BLACK AND WHITE AD IN OUR SHOW CATALOG. AD MUST BE PRINT READY.

ALL SPONSORS WILL BE LISTED ON OUR CLUB FACEBOOK PAGE.

Send all advertising material along with fees payable to
South Florida Rottweiler Klub, franetab@gmail.com
Advertising copy will be posted on SFRK Facebook page.
Ads and payment must be received by March 2, 2014.

RAFFLE DONATIONS

We greatly appreciate any and all raffle donations. A list of donors will appear in our show catalog and SFRK Facebook page. If you would like to donate, please contact:

Boban Franeta: franetab@gmail.com + 1 305-482-3052

****Passports required to enter USA***

For our visitors from outside USA, please check if you require a VISA, prior making travel arrangements.

**** Dogs must have current rabies vaccination certificate.***

VENDOR BOOTH SPACE AVAILABLE

We are offering free space to vendors who donate \$200 in products to our raffle.

CONCESSIONS AVAILABLE BOTH DAYS

Great food and beverages will be available at the show site Saturday and Sunday.

TROPHY DONATIONS

Any and all trophy donations are greatly appreciated. If you would like to make a trophy donation, please let us know.

SIEGER SHOW:

- Most Beautiful in Show - \$200
- 2013 RKNA Klubsieger - \$150
- 2013 RKNA Klubsiegerin - \$150
- 2013 RKNA Youth Sieger - \$150
- 2013 RKNA Youth Siegerin - \$150
- 2013 RKNA Kombi Sieger- 150\$
- Most Beautiful Male Puppy - \$75
- Most Beautiful Female Puppy - \$75
- Class trophies - \$50

BREED SHOW:

- Best in Show - \$200
- Best Adult Male - \$150
- Best Adult Female - \$150
- Kombi Sieger/in - \$150
- Best Youth Male - \$150
- Best Youth Female - \$150
- Best Puppy Male - \$75
- Best Puppy Female - \$75
- Class trophies - \$50

Breed Survey Trophies - Males - \$100

Breed Survey Trophies - Females - \$100

Standard Evaluation Trophies - Males - \$100

Standard Evaluation Trophies - Females - \$100

Show location:

Topeekeegee Yugnee Park

3300 N. Park Rd., Hollywood, Florida

<http://www.broward.Org/parks/topeekeegeeyugneepark/Pages/Default.aspx>

Drive 1 mile west from Exit 21 on I95 highway.

The Seminole Indian name of this 138.6-acre urban park, Topeekeegee Yugnee, means "meeting or gathering place," appropriate for a park known for its shady picnic areas, many shelters, and a gazebo that is often booked for small weddings and receptions. T.Y. Park is home to Castaway Island Water Park, **a full-hookup RV campground with Wi-Fi**, 13 picnic shelters, an abundance of open

picnic areas, and a large, open field suitable for a variety of family activities.

ACCOMMODATIONS

The Miami area is famous for its variety of hotels and accommodations of all kinds. Rooms range from \$60 per room for 2 star hotel/motel to \$600+ for 5 star hotels (dog friendly). The show grounds are located at TYs Park in Hollywood, between Miami and Fort Lauderdale, right of Exit 21 on I95, on Sheridan Street. Wherever you choose to stay - closer to the beach, or closer to Miami, or closer to Fort Lauderdale, you will be approximately maximum 30 minutes away from the show location. Please make sure you check if the hotel of your choice accepts dogs. This same weekend, there is a Miami Food & Wine Festival, one of the largest events in Miami in the whole year, book your hotel as early as possible, to avoid paying higher rates for your accommodation! If you need any assistance booking your accommodation, contact:

Boban Franeta, +1 305-482-3052 franetab@gmail.com.

WWW.HOTELS.COM

WWW.BOOKING.COM

WWW.ORBITZ.COM

Here are some pet friendly hotels that we selected for you:

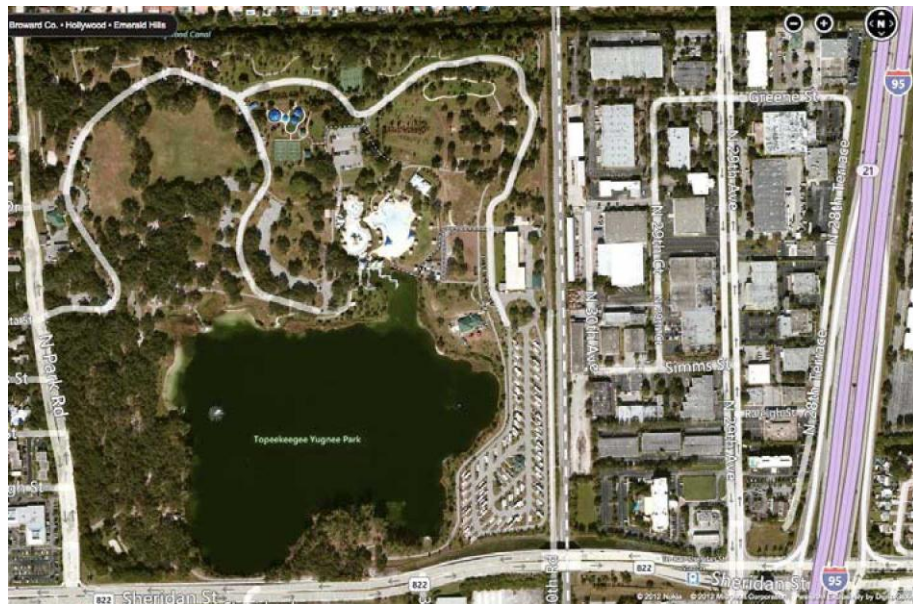
La Quinta Inn & Suites Ft. Lauderdale Airport

(5 minutes from the show location)

Address: 2620 North 26th Avenue, Hollywood, FL 33020

Phone: (954) 922-2295

<http://www.lq.com/lq/properties/propertyProfile.do?propId=985>



Quality Inn & Suites Hollywood Boulevard
(7 minutes from the show location)

4900 Hollywood Boulevard, Hollywood, FL 33021
(954) 981-1800

<http://www.qualityinn.com/hotel-hollywood-florida-FL708?source=gglocalai>

Days Inn Fort Lauderdale Hollywood/Airport South
(5 minutes from the show location)

2601 N 29th Avenue/I-95, I-95 & Sheridan Street, Hollywood, FL 33020 US

Phone: 1-954-923-7300

<http://www.davsinn.com/hotels/florida/hollywood/davs-inn-fort-lauderdale-hollywood-airport-south/hotel-overview>

[Residence Inn Miami Aventura Mall](#)

(15 minutes from the show location)

19900 West Country Club Drive ■ Aventura, Florida 33180 USA

Phone: +1-786-528-1001

<http://www.marriott.com/hotels/travel/miara-residence-inn-miami-aventura-mall/>

[Holiday Inn Ft. Lauderdale-Airport](#)

(walking distance to the show location, but does NOT accept dogs)

2905 Sheridan Street, Hollywood, FL

(877) 863-4780 holidayinn.com

For assistance with booking your room using a group rate discount code for La Quinta Inns and Suites contact:
Boban Franeta, +1 305-482-3052 franetab@gmail.com

CAR RENTAL:

WWW.CARRENTALS.COM

Enterprise Car Rental Reservations (open 24 hours)

1-800-261-7331

IMPORTANT SHOW INFORMATION:

Dogs born in countries with anti-docking laws must be shown with a natural tail.

A copy of your dog's proof of registration papers MUST be sent in with each entry. Copies of supporting documents for the Champion and Working classes, breed surveys, and Standard Evaluations must also be submitted.

Spayed or neutered dogs may not show with the exceptions of Stud Dog, Brood Bitch, and Exhibition Classes.

Dogs with missing teeth will be excused from the ring

Males will be judged first

Dogs are shown in natural stance; no hand stacking is allowed. No food is allowed in the ring; toys may be used at the judge's discretion. Double handling is encouraged.

Any entry that does not meet the Class requirement will be invalid.

When a dog is eligible for more than one class, the dog's owner determines the entry

This is a German style Breed show

The event is being held outdoors, rain or shine

No dogs are allowed to be tied out at the show site or ringside

No dogs are allowed to be crated near the ring

Please use designated areas to exercise your dogs and clean up after them

Adult classes will be moved long enough for the judge to evaluate the movement

You should always receive confirmation to the shows you enter. SFRK and RKNA are

not responsible for lost or late postal deliveries or lost or misdirected electronic entries.

It is the entrant's responsibility to check on entry status on or before the entry closing

date if confirmation has not been received.

**Contact Boban Franeta, franetab@gmail.com
to check your entry status.**

STANDARD EVALUATION TEST INFORMATION

The Standard Evaluation Test is the top half of the Breed Suitability test. The dog's conformation must be judged of breeding quality and free of disqualifying faults. **The dog must have a weight certificate signed by a vet certifying weight dated 2 weeks prior to test.** The dog must have a valid hip certification and have a tattoo for identification or microchip. Handler is responsible for providing the Reader. The Rottweiler is assessed for conformation and soundness.

The test includes everything on the dog being measured including:

height at withers

body length

chest depth

skull

*the same temperament test as ZTP dogs

Original paperwork must be presented to Show Secretary papers, hip papers, scorebook and current membership to

muzzle

chest circumference

eye color

bite & dentition

bone strength

head shape

cheek bone

general behavior

*gun sureness test

upon registration at show. This includes registration

card from organization the scorebook is held with for titles

be recorded on Standard Evaluation.

RKNA CHAMPIONSHIP PROGRAM

To attain the RKNA Championship title, a dog must achieve 5 total points. Points can be earned in the following ways:

- 1 point: V1 rating at any RKNA show
- 1 point: RKNA Best Male/Female
- 2 points: Ztp
- 2 points: IPO title

To attain the RKNA Elite Championship title, a dog must be a RKNA Champion and achieve an additional five (5)

Points. Points can be earned in the following ways:

- 1 point RKNA Best or Most Beautiful in Show
- 1 point RKNA Kombi-Sieger/in
- 2 points RKNA Sieger/in or RKNA Klub Sieger/in
- 2 points RKNA Gekort.

ZTP EVALUATION AND PERFORMANCE ROUTINE

1. The Host Club is responsible for providing a written explanation of the test to exhibitors.
2. Clubs may select more than one helper for the Ztp Performance Routine. All helpers (barring an injury) must work all dogs in an equal manner and should not be overly hard at any time. The stick hits should be moderate and a leather covered stick must be used. The sleeve should be broken in but not mutilated. Helpers must wear a Trial Jacket.
3. The Canadian Kennel Club Standard for the Rottweiler with additions per RKNA Bylaws will be used for judging this event. Please refer to the RKNA website for a detailed description of the standard.
4. Dogs will be weighed, measured and critiqued. A weight certificate (issued within 20 days of the test) may be substituted for weighing the dog if no scale is available. Character traits of the dog become more or less apparent during the weighing and measuring process.
5. The tattoo or microchip number shall be read out loud as part of the measuring and critique.
6. The following tests will be done to establish the interaction in a group and sensitivity to noise.
 - a. The Group. The handler with dog on leash walks through a group of five to eight people. The handler and dog return to the center of the group where the dog sits. The group, when instructed by

the judge, converges on the dog and handler and remains there until told by the judge to disperse.

b. The Gun. The handler and dog walk away from the judge. At a distance of fifteen paces, a 22 short blank starter pistol, or its equivalent, is fired twice with a short interval in between each shot. Should the dog have a reaction to the gunfire, this exercise may be varied and repeated at the judge's discretion. If the dog continues to show a strong reaction to gunfire, the test is stopped and the dog is deemed unbreedable

7. The following is the Performance Routine for a RKNA Ztp. This routine may vary slightly under different judges, but the test performed must be readily recognized as a Ztp and conform to RKNA rules outlined in the Manual:

- a. The handler and dog will report to the judge. The dog's tattoo or microchip number will be rechecked before the protection work begins.
- b. The dog and handler approach the blind on leash.
- c. At a distance of approximately 30 feet away from the blind the handler removes the dog's leash and holds the dog by the collar.
- d. The handler continues to approach the blind while holding the dog by the collar.
- e. At approximately 12 feet from the blind, at a line marked on the ground, the judge will instruct the helper to come out of the blind and attack the handler. The handler must immediately release the dog.
- f. The handler shall remain at the spot of releasing the dog until told otherwise by the judge.
- g. The helper shall:
 - i. Come out immediately from the blind when directed by the judge and attack towards the handler.
 - ii. Catch the dog on the sleeve.
 - iii. Drive the dog and apply two stick hits with an interval of 2 or 3 steps between hits.
 - iv. Continue to drive the dog briefly, approximately 3 to 5 paces, until directed by the judge to stop.
- h. The dog should immediately go to the helper and grip the sleeve and continue gripping the sleeve while being driven.
- i. When the helper stops, the dog outs, with or without command from the handler.
- j. When instructed by the judge, the handler will go to the dog and put the dog on leash.
- k. The handler, with the dog on leash, will heel down the field to a blind designated by the judge.
- l. On instruction from the judge the handler will leave the blind (on leash) and heel to the center of the field.
- m. With the dog in the basic position, the handler will remove the leash and hold the dog by the collar. The dog must remain quietly by the handler's side.

- n. At the instruction of the judge, the helper will come from behind a blind that was designated by the judge (approximately 40 meters away from the dog and handler) and walk at a normal pace to the center of the field.
- o. The handler may challenge the helper as he leaves the blind.
- p. At the center of the field the helper turns and runs towards the dog and handler in a threatening manner. This may, at the judge's discretion, include yelling. The handler releases the dog.
- q. The handler shall remain at the spot of releasing the dog until told otherwise by the judge.
- r. The dog must grip and remain on the sleeve while being driven 4 or 5 paces (no stick hits)
- s. The helper stops and the dog outs, with o r without a command.

t. When instructed by the judge, the handler goes to the dog. The handler puts the dog on leash and heels back to the judge and reports that the Ztp is completed.

Additional Information

1. After an out the dog should guard the helper until the judge instructs the handler to pick up the dog.
2. Dogs who stray away from the helper more than 5 meters will be automatically failed.
3. The dog must out with or without command from the handler and without being touched by the handler. The handler may give 3 separate commands to the dog to out. Two of these commands will be from a distance, the third may be closer. If the dog does not out on the third attempt, the dog cannot pass. At no time may the handler touch the dog before the dog outs. If the dog is inappropriately touched before the out, the Ztp is over and the dog may not pass.
4. If the dog does not grip the sleeve or if the dog should come off during a drive or stick hits, the helper must continue to press the dog. If the dog returns to the sleeve, the test continues. If the dog fails to re-grip, the judge will stop the test and the dog cannot pass.

KORUNG & GEKORT

The Korung is only available at the RKNA Spring Sieger Show and the RKNA Klub Sieger Show.

30.f Information for Owners/Handlers of dogs entering First Korung or Lifetime Korung.

- 1) The owner and/or handler of any dog are liable for any damage caused by his or her dog.
- 2) The entry form for First Korung or Lifetime Korung must be sent to the Breed Survey Secretary before the entry closing date.
- 3) Dogs born in countries where docking is forbidden by law shall be shown with the tail left in its natural state. If the tail has been docked, the dog shall not be allowed to participate.
- 4) There shall be no preference in critiquing dogs with docked tails or for dogs with tails left in the natural state.
- 5) It must be possible to identify the dog by means of a tattoo number or microchip. A microchip reader must be provided by the dog's owner or handler.
- 6) The following original documents must be submitted to the Breed Survey Secretary on the day of the Korung:
 - a. Registration for the dog entered
 - b. RKNA or ADRK Ztp Certificate or RKNA or ADRK Gekort Certificate if entering a Lifetime Korung
 - c. Scorebook showing titles earned, show ratings, scorebook number, and full

- registered name of the dog
- d. Valid Hip Certification
- e. Three (3) show critiques as described in First Korung/Lifetime Korung Prerequisites
- f. Certificate confirming litter registration requirements with a national breed registry if entering a Lifetime Korung.

7) Should any of the requirements not be fulfilled prior to the start of the Korung, the dog shall not perform the test and the entry will not be refunded.

30.g First Korung Prerequisites

- 1) A male must be a minimum of thirty-six (36) months of age. A bitch must be a minimum of thirty (30) months of age.
- 2) The dog must have passed a RKNA or ADRK Ztp prior to the entry closing date.
- 3) The dog must have obtained three (3) show critiques with a SG or V Rating from two different judges.
- 4) A male must have a valid RKNA Recognized IPO 3 title. A bitch must have a valid RKNA Recognized IPO 1 title.
- 5) The dog must have passed an Endurance Test (AD).
- 6) The dog must have correct mouth pigmentation and dark eyes (1a - 3a).
- 7) Dogs may enter the First Korung in spite of lost teeth provided copies of the dog's RKNA or ADRK Ztp and three (3) show critiques from adult classes showing complete scissors bite are submitted with the entry and the original documentation is presented on the day of the Korung.

30.h Lifetime Korung Prerequisites

- 1) The dog must have previously passed the RKNA or ADRK First Korung.
- 2) The Lifetime Korung may be attempted no sooner than the third Korung event after the First Korung was earned and no later than two (2) years.
- 3) After passing a First Korung and before attempting a Lifetime Korung a male must have sired at least three (3) litters registered with a national breed registry. A bitch must have whelped at least one (1) litter registered with a national breed registry.
- 4) Dogs may enter a Lifetime Korung in spite of lost teeth provided copies of the dog's First Korung and three (3) show critiques from adult classes showing complete scissors bite are submitted with the entry and the original documentation is presented on the day of the Korung.

30.i First Korung and Lifetime Korung Evaluation and Performance Routine

- 1) The purpose of the First Korung and Lifetime Korung is to find the best dogs in order to improve the overall qualities of the Rottweiler.
- 2) The President of RKNA, or a person delegated by him/her, will officiate at all Korung events. The delegate must have experience in the Korung.
- 3) The President, or delegate appointed by The President, the RKNA Head Judge, the presiding Judge and the Director of Regions shall oversee the helper selection, their equipment and helper work for all breed surveys at the RKNA Spring Sieger Show and the RKNA Klub Sieger Show, according to the guidelines set by the RKNA.

- 4) Two helpers (barring an injury) must be used in the Korung. All helpers must work all dogs in an equal manner and should not be overly hard at any time. The stick hits should be moderate and a leather covered stick must be used. The sleeve should be broken in but not mutilated. Helpers must wear a Trial Jacket and Trial Pants.
- 5) Dogs shall be judged first, followed by bitches with bitches in season last.
- 6) The judgment of the Kormeister or Judge is final. No appeals are possible.
- 7) If a dog fails a First Korung one more attempt may be made. If a dog fails a Lifetime Korung one more attempt may be made within 2 years of the first attempt.
- 8) The Korung results (pass or fail) will be recorded in the dog's RKNA scorebook.
- 9) The Host Club is responsible for providing a written explanation of the test to exhibitors.
- 10) For the Korung a performance level higher than that of a RKNA Ztp and with greater character examination is required.
- 11) Dogs will be weighed, measured and critiqued. A weight certificate (issued within 20 days of the test) may be substituted for weighing the dog if no scale is available.
- 12) The tattoo or microchip number shall be read out loud as part of the measuring and critique.
- 13) The following tests will be done to establish the interaction in a group and sensitivity to
 - a. The Group. The handler with dog on leash walks through a group of five to eight people. The handler and dog return to the center of the group where the dog sits. The group, when instructed by the judge, converges on the dog and handler and remains there until told by the judge to disperse.
 - b. The Gun. The handler and dog walk away from the judge. At a distance of fifteen paces, a 22 short blank starter pistol, or its equivalent, is fired twice with a short interval in between each shot. Should the dog have a reaction to the gunfire, this exercise may be varied and repeated at the judge's discretion. If the dog continues to show a strong reaction to gunfire, the test is stopped and the dog is deemed not breed worthy.

14) Further character examination will be performed analogous to the IPO 3 routine. The following is the Performance Routine for a RKNA Korung. This routine may vary slightly under different judges, but the test performed must be readily recognized as a Korung and conform to the Manual:

- a. The handler and dog will report to the judge. The dog's tattoo or microchip number will be rechecked before the protection work begins.
- b. The dog must search 2 blinds (as in IPO 1). Failure to search the empty blind is grounds for dismissal by the Judge.
- c. The handler is to remain in center field while the dog barks and guards the helper in the blind.
- d. On instruction from the judge the handler moves to a position behind the dog.
- e. On instruction from the judge the handler calls the dog to heel.
- f. The handler tells the helper to step out of the blind and the handler repositions the dog.
- g. The handler searches the helper and returns to the blind.
- h. The helper escapes and the dog must chase and capture the helper.
- i. The dog outs, with or without command from the handler.
- j. The helper re-attacks with two stick hits.
- k. The dog outs, with or without command from the handler.
- l. The handler goes to the dog and takes the dog by the collar.
- m. On instruction from the judge the handler heels his dog to the end of the field.
- n. Once positioned at the end of the field the handler may hold the dog by the collar in preparation for the test of courage. The dog should remain reasonably quiet.
- o. The helper will emerge from blind #5 or #6 and walk to the center of the field.
- p. At the center of the field the helper turns and runs towards the dog and handler in a threatening manner. This may, at the judge's discretion, include yelling. The handler releases the dog.
- q. The helper catches the dog.
- r. The dog outs, with or without command from the handler.

- s. The helper re-attacks with two stick hits.
- t. The dog outs, with or without command from the handler.
- u. The dog must stay and guard the helper until the judge instructs the handler to pick up the dog.
- v. The handler disarms the helper and does a side transport back to the judge.
- w. The handler gives the stick to the judge and reports out.

- 15) Special attention will be paid to the natural inherited genetic characteristics of the dog.
- 16) Dogs that stray away from the helper more than 5 meters will be automatically failed.
- 17) Dogs who release the grip of the helper's arm due to the stick hits will be automatically failed.



South Florida Rottweiler Klub
420 NE 152nd st
Miami, Florida
USA 33162

Cell: 1-305-482-3052

Email: info@sfrk.org